

# SHANDONG HAOLONG INTERNATIONAL TRADE CO., LTD.

## 山东浩龙国际贸易有限公司



Shandong Haolong International Trade Co., Ltd. was established in 2023 and specializes in the international trade of lifting equipment and related mechanical equipment. As a wholly-owned subsidiary of Jinan Haolong Lifting Machinery Manufacturing Co., Ltd., Haolong International Trade is committed to exporting high-quality lifting platforms, mobile boarding bridges, fixed boarding bridges and other products to the global market.

With strong technical support and production capabilities, the company provides customized equipment solutions that meet the needs of different countries and industries through close cooperation with global customers. Shandong Haolong International Trade ensures timely delivery of products and high-quality customer experience through a complete after-sales service system and global logistics network.

With excellent product quality, professional service team and global business layout, Shandong Haolong International Trade Co., Ltd. has become an important supplier in the field of global lifting equipment, widely serving Europe, North America, Southeast Asia, the Middle East, South America and other regions.

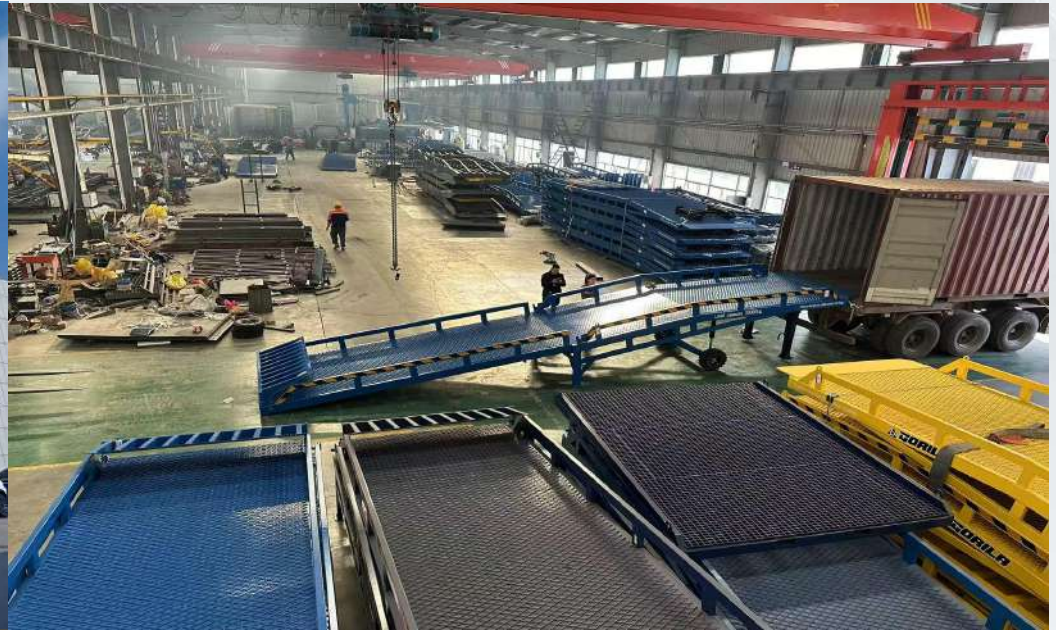


## Survive by quality, develop by reputation

**Company address: Room 1-1-2, both ends of Workshop 2, Lide Industrial Park, No. 39, Ankang Street, Jibei Street, Jiyang District, Jinan City, Shandong Province**



# Factory display:









# 营业执照

(副本)

1-1



扫描市场主体身份码了解更多登记、备案、许可、监管信息，体验更多应用服务。

统一社会信用代码

91370125MAD05YCH6C

名称 山东浩龙国际贸易有限公司

类型 有限责任公司(自然人投资或控股)

法定代表人 高北萍

经营范围 一般项目：货物进出口；物料搬运装备销售；物料搬运装备制造；液压动力机械及元件销售；机械设备的销售；机械零件、零部件销售；电气信号设备装置销售；金属制品销售；交通及公共管理用标牌销售；交通安全、管制专用设备制造；特种设备销售；智能物料搬运装备销售；智能机器人销售；工业自动化控制系统装置销售；金属切割及焊接设备销售；智能车载设备销售；汽车拖车、求援、清障服务；环境保护专用设备销售；环境监测专用仪器仪表销售；包装专用设备销售；纺织专用设备销售；农业机械服务；农业机械制造；农业机械销售；印刷专用设备制造；塑料加工专用设备销售；工艺美术品及收藏品零售（象牙及其制品除外）；工艺美术品及礼仪用品销售（象牙及其制品除外）；工艺美术品及收藏品批发（象牙及其制品除外）；工艺美术品及礼仪用品制造（象牙及其制品除外）。（除依法须经批准的项目外，凭营业执照依法自主开展经营活动）

注册资本 陆佰万元整

成立日期 2023 年 09 月 22 日

住所 山东省济南市济阳区济北街道安康街39号立德产业园2号车间西端1-1-2号室

登记机关



2023 年 09 月 22 日





01

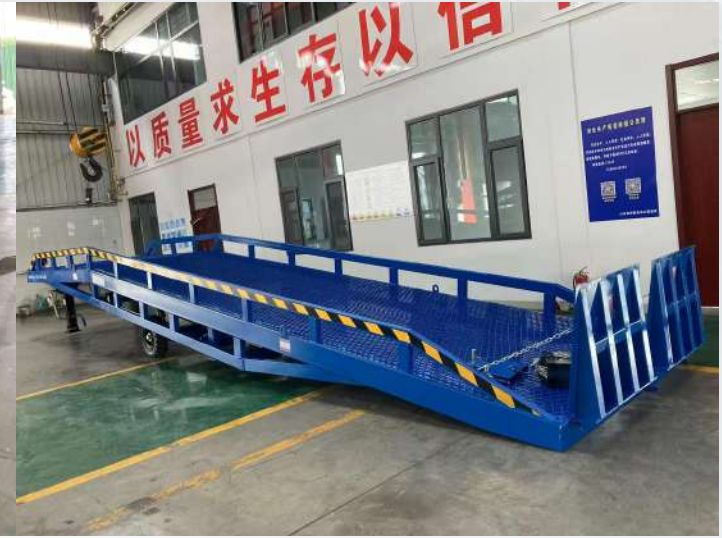
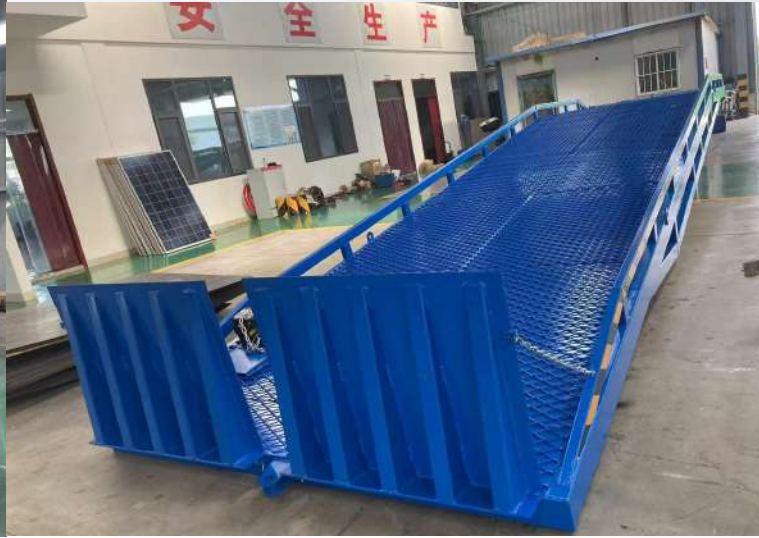
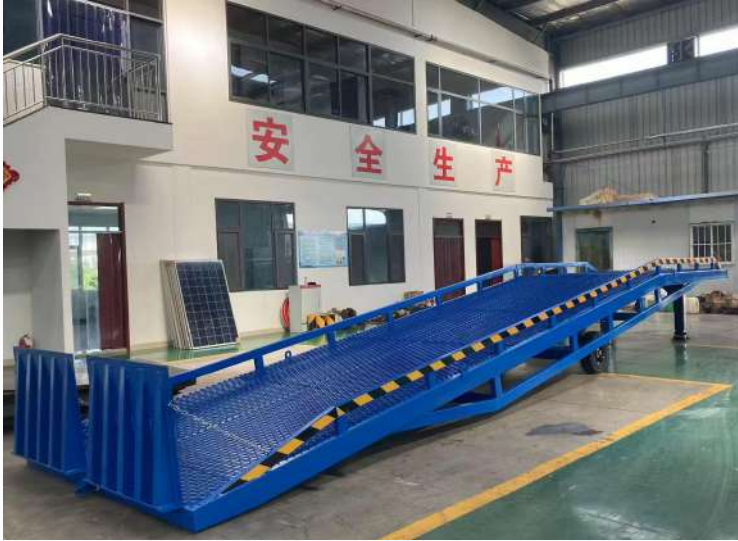
# Mobile boarding bridge

Mobile hydraulic loading ramp is a movable loading and unloading equipment used to solve the height difference between trucks and cargo platforms. The bridge body is adjusted by the hydraulic system to adapt to different vehicles. It has guardrails on both sides, non-slip surface, and wheels at the bottom for easy movement. It can complete cargo loading and unloading efficiently and safely, and is widely used in logistics warehousing, docks and other places.





## ● Conventional mobile boarding ramp



## ● Hollow steel grating material boarding bridge







## ● Two-section foldable mobile boarding ramp



## ● Three-section pull-out mobile boarding ramp







02

# Fixed boarding bridge

Fixed loading ramp is a special auxiliary equipment for realizing quick loading and unloading of goods. Its height adjustment function is used to build a bridge between the truck and the cargo platform in the warehouse, so that forklifts can be used to move and carry out batch loading and unloading of goods inside the truck.





## ● Fixed boarding bridge



## ● Fixed frame boarding ramp







- Wall-mounted fixed boarding ramp







03

# Rail-type freight elevator

The rail-type cargo lift is a hydraulic lifting mechanical equipment used for lifting cargo. It uses a hydraulic cylinder as the main power and is driven by heavy chains and steel ropes to ensure the absolute safety of the machine. It does not require a pit or a machine room, and is particularly suitable for basements, warehouse renovations, and new shelves. It is easy to install and maintain, beautiful, safe, and easy to operate. It is produced according to the actual environment of the site.





- Rail-type freight elevator







04

# Fixed scissor platform

Fixed scissors-type lifting platforms are divided into fixed single-fork lifting platforms and fixed double-fork lifting platforms. They are a type of cargo lifting equipment with good lifting stability and a wide range of applications. They are mainly used for transporting goods between height differences on production lines; loading and unloading materials; adjusting the height of workpieces during assembly; feeding materials from high-altitude feeders; lifting components during assembly of large equipment; loading and unloading materials from large machine tools; and quick loading and unloading of goods in warehousing and loading and unloading areas in conjunction with forklifts and other handling vehicles.







- Fixed scissor platform







05

# flatbed truck



A tractor-type flatbed trailer is a type of equipment used specifically for cargo transportation. Its core components include a flatbed body and a traction device. The flatbed body is usually made of high-strength steel and has superb load-bearing capacity and durability.

Trackless electric flat cars, as the name implies, do not require transfer parts, loading and other workpieces. They are special electric flat car models and mainly use polyurethane rubber wheels. As a cross-over vehicle in factories and workshops, trackless rubber-wheeled electric flat cars can not only go straight, but also turn, which greatly improves the convenience of regional transportation and solves the troubles of many companies in transporting goods in different directions.





- Towable flatbed trailer



- Electric trackless flat car







06

# Fully self-propelled lift

A fully self-propelled lift is a lifting platform that can move independently in the air. Its biggest feature is that the operator can complete all actions such as lifting, moving forward, moving backward, turning, etc. on the work platform through the control handle without going down to the ground. No manual traction or external power supply is required, which greatly improves the flexibility, convenience and safety of high-altitude operations.







- Fully self-propelled lift



- Crawler type self-propelled lift







07

# Hydraulic flap unloader

Flip-plate unloader-hydraulic unloading platform

Hydraulic unloader is a kind of equipment that unloads goods through hydraulic system drive. It is widely used in chemical industry, port, warehousing, building materials and other scenes that require large-scale unloading.





- Hydraulic flap unloader







THANKS FOR WATCHING

**If you are interested in any product, Please feel free to contact us**  
**HAOLONG Machinery looks forward to cooperating with you**

